

Instant Technologies



Instant Buddy-List Exporting Utility for IBM Sametime

Installation and Overview Guide

Instant Technologies

January 2013

Copyright and Disclaimer

This document, as well as the software described in it, is furnished under license of the Instant Technologies Software Evaluation Agreement and may be used or copied only in accordance with the terms of such license. The content of this document is furnished for informational use only, is subject to change without notice, and should not be construed as a commitment by Instant Technologies. Instant Technologies assumes no responsibility or liability for any errors or inaccuracies that may appear in this document. All information in this document is confidential and proprietary.

Except as permitted by the Software Evaluation Agreement, no part of this document may be reproduced, stored in a retrieval system, or transmitted in any form or by any means, electronic, mechanical, recording, or otherwise, without the prior written permission of Instant Technologies .

Copyright © 2013 Instant Technologies, All rights reserved.

Trademarks

All other trademarks are the property of their respective owners.

Contact Information

Visit our Website for Customer Support information.

<http://www.instant-tech.com/>

Contents

| | |
|---|----|
| Introduction | 3 |
| System Requirements and Installation of Core Components | 4 |
| Installation Prerequisites | 4 |
| System Requirements: | 4 |
| Steps Prior to Running the Utility | 4 |
| Provisioning a Sametime Service Account | 4 |
| Register IBM Lotus Notes Component (NLSXBE.DLL) | 4 |
| Configure System Environment Variables | 5 |
| Specify settings | 8 |
| Running Utility – To Export Buddy lists | 10 |
| Exported Content | 11 |
| Buddy list XML files | 12 |
| Statistics | 14 |
| Log files | 15 |

Introduction

These notes briefly describe the installation procedure required to install the Instant Buddy-List exporting utility. This utility allows you to export buddy list of user entries present on IBM Sametime Server (VPUserInfo.nsf database). Buddy lists are exported as both XML as well as plain text files. The application is designed to create a collection of XML files, representing user contact lists, which will be imported to Microsoft Lync using the Instant Contact List Importing tool.

Typically, the application will be used to export all of the contacts from the target vpuserinfo.nsf database. In some cases, certain customers may wish to only export certain contacts, or to create small copies of the vpuserinfo.nsf database with only a subset of the total users.

The export process will create several different outputs, all of which might be useful during a migration process.

- XML file representing a contact list: The application is primarily designed to generate a unique XML file that represents the user's Sametime contact list. This XML file contains additional metadata about each contact within the user's contact list and will be used as the import source as contacts are created within Microsoft Lync
- Each XML file will contain a list of all users referenced in the specified contact list. For each user, the existing Sametime User ID (ST User ID) will be captured, as well as the user's email address. This email address will be used during the 'importing' process and will be helpful in retrieving the Lync SIPURI from the enterprise Active Directory instance.
- Statistics on public group usage, private group usage, and which users are the most frequently referenced users across the entire system. The statistics related to public group usage might be helpful in determining which public groups should be 'migrated' to the Lync environment. In many cases, a small collection of public groups will be referenced by many users in an organization and the statistics module is designed to help identify these usage metrics.
- Log files are generated as part of the export process. These log files will identify which users were successfully exported, which users were not successfully export (i.e. they may not have a record in the names.nsf database – perhaps they are no longer with the company), and other information to help investigate the export process

The installation process will not require any additional software to be installed on your IBM Sametime server.

System Requirements and Installation of Core Components

Installation Prerequisites

System Requirements:

- Windows 7 or Server 2008 OS
- Oracle JDK 1.6 or higher (32 bit version only)
- IBM Lotus Notes Client 8 or higher

Steps Prior to Running the Utility

After downloading the utility you will need to perform following steps before running it:

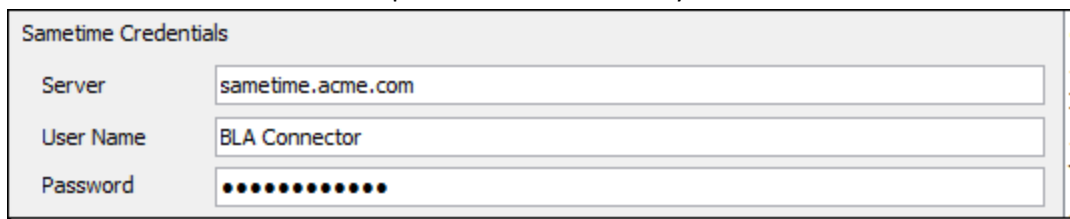
- Ensure Lotus Notes Account has access to VUserInfo.nsf and Names.nsf databases
- Provisioning a Sametime Service Account
- Register IBM Lotus Notes Component (NLSXBE.DLL)
- Configure system environment variables

Provisioning a Sametime Service Account

To run the contact list export process, the application needs a regular Sametime Account in order to activate certain services of the various Sametime APIs. For example, this login activity enables the application to connect with the Sametime server in order to initialize Buddy list service - which allows utility to read through buddy list records and export them out as XML files.

You can easily use an existing Sametime account for this export utility, or quickly create a unique account that will only be used during the export process. The export application will not dispatch IM messages using this account, however, the system will need to successfully login to the Sametime server using this account – and the login will remain active during the entire export process.

Account details will need to be specified to run the utility:



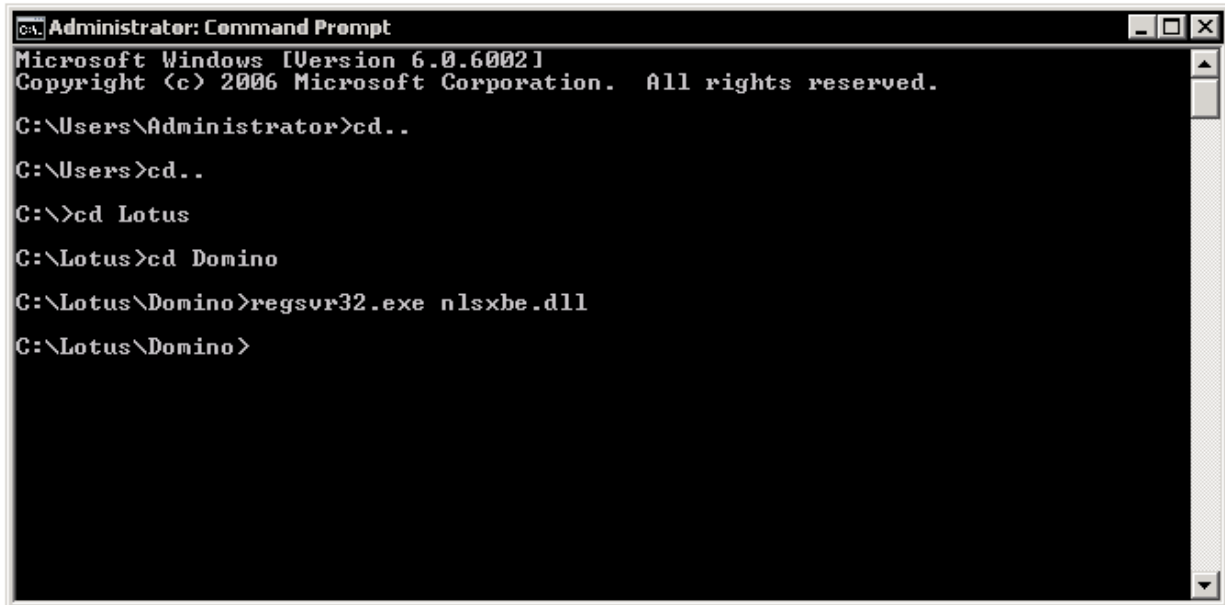
The screenshot shows a dialog box titled "Sametime Credentials". It contains three input fields: "Server" with the value "sametime.acme.com", "User Name" with the value "BLA Connector", and "Password" which is masked with 12 black dots.

Register IBM Lotus Notes Component (NLSXBE.DLL)

Follow the steps below to register IBM Lotus Notes Component (see below). Depending on the specific installation of the Notes client, the Lotus Notes install process may, or may not, have registered this component. This component provides the wrapper to map the underlying Java API calls to the standard Notes API.

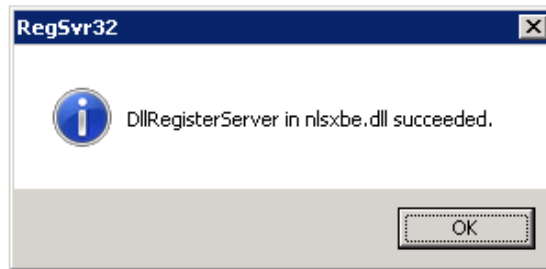
1. Run command prompt.
2. Navigate to Lotus Notes installation directory.

3. Execute the command: `regsvr32 nlsxbe.dll`



```
Administrator: Command Prompt
Microsoft Windows [Version 6.0.6002]
Copyright (c) 2006 Microsoft Corporation. All rights reserved.

C:\Users\Administrator>cd..
C:\Users>cd..
C:\>cd Lotus
C:\Lotus>cd Domino
C:\Lotus\Domino>regsvr32.exe nlsxbe.dll
C:\Lotus\Domino>
```

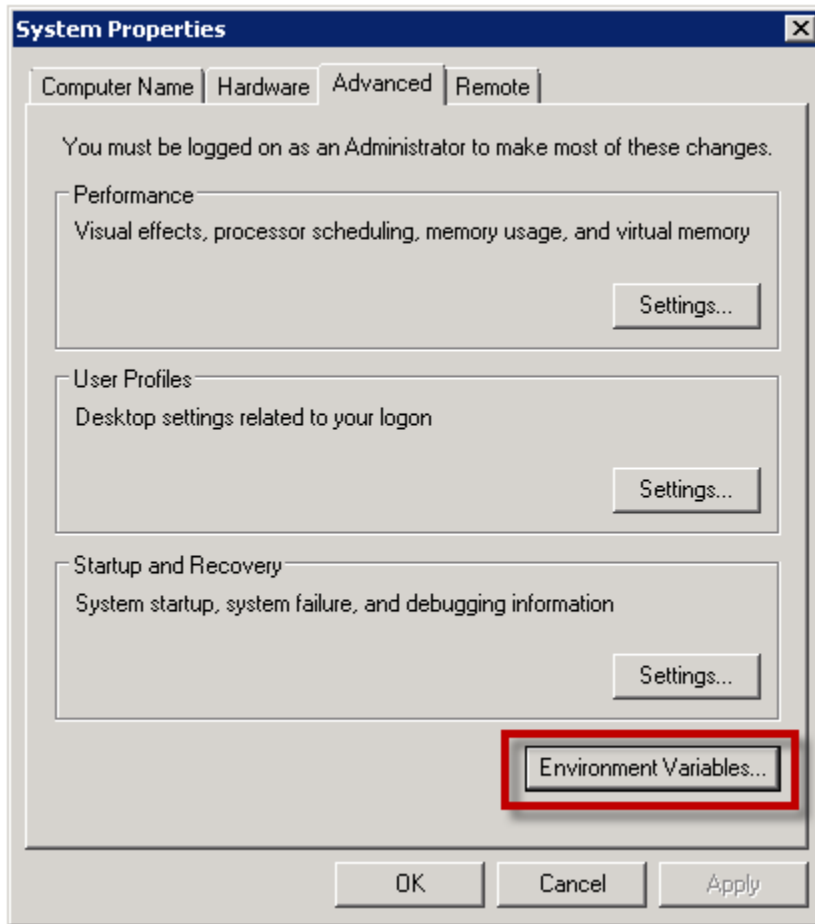


Configure System Environment Variables

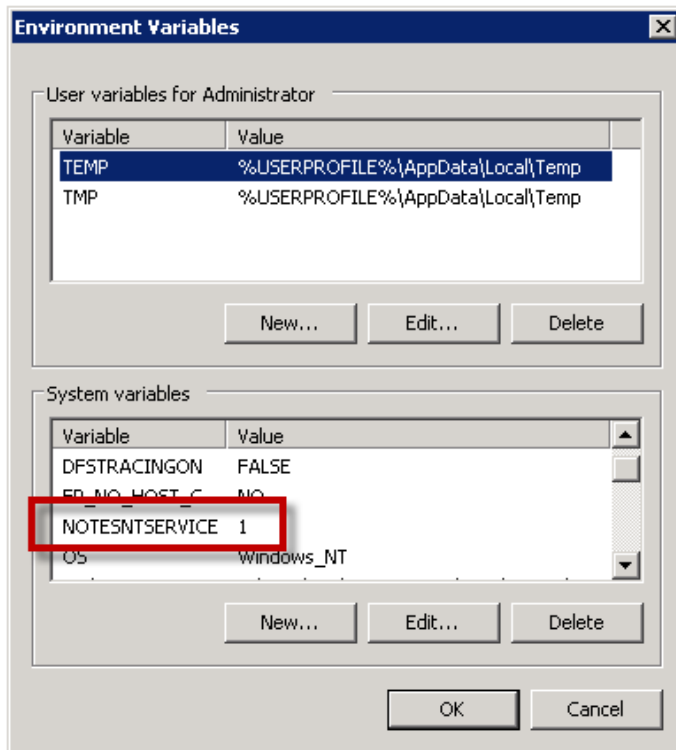
Follow the steps below to configure system environment variables:

1. Go to Control Panel.
2. Run System Properties module.
3. Navigate to "Advanced" tab.

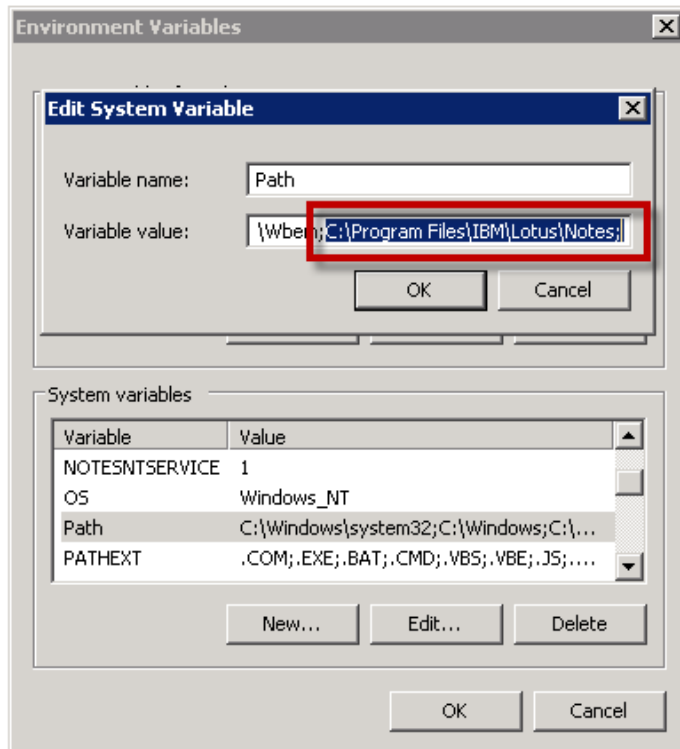
4. Click on "Environment Variables..." option.



5. Add the system variable “NOTESNTSERVICE” with the value set to **1**



Update the system environment variable “Path” and append path to Lotus Notes installation directory.



Specify settings

Next unzip the utility and open the file “Settings.ini” in any text editor. Settings.ini holds the settings needed to run the utility.

File looks like the following screen shot:

```
#Sametime Server FQDN
SAMETIME_SERVER=sametime.acme.com

#Sametime Service Account
SAMETIME_USERNAME=BLA Connector

#Sametime Client ID (Identify as Sametime Client 8.0.2 or 8.5.1)
SAMETIME_CLIENTID=na

#Domino Server FQDN
NAMES_DOMINO_SERVER=sametime.acme.com

#Domino Server FQDN
VPUSERINFO_DOMINO_SERVER=sametime.acme.com

#Path to Names.nsf (Address Book)
NAMES_DBPATH=C:\\databases\\names.nsf

#Path to Vpuserinfo.nsf (holding buddy lists)
VPUSERINFO_DBPATH=C:\\databases\\vpuserinfo.nsf

#Export Buddy list as plain text files
EXPORT_TO_TEXT=true

#Export a selected set of users
ENABLE_SEARCH_FILTER=false

#List of users to be exported
SEARCH_FILTER_FILE=C:\\Users.txt

#Directory which should hold the exported contents
EXPORT_DIRECTORY=C:\\Exported Files

#Export only first XXXX users
ENABLE_EXPORT_BY_COUNT=true

#Number of users to be exported
EXPORT_COUNTER=1000

#Generate statistics - No of users, success count, list of public groups etc...
GENERATE_STATISTICS=true
```

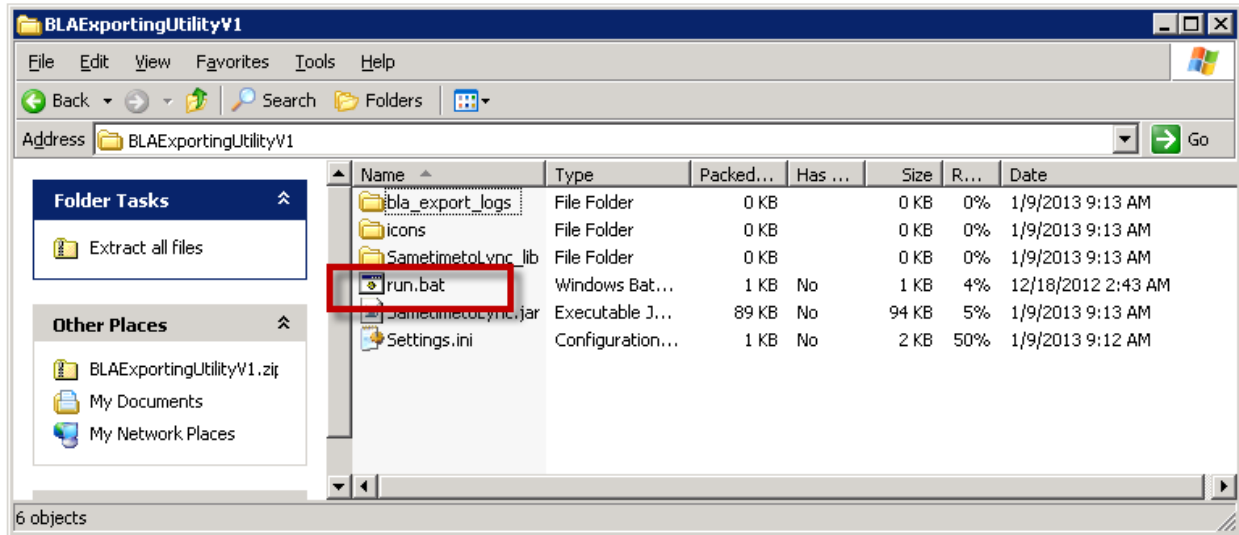
List of settings is as follows:

| Field | Purpose |
|---------------------------------|---|
| SAMETIME_SERVER | Sametime Server FQDN (like: sametime.acme.com) |
| SAMETIME_USERNAME | Sametime Service Account |
| NAMES_DOMINO_SERVER | Domino Server FQDN which hosts names.nsf, leave the value blank if accessing the database from local file system |
| VPUSERINFO_DOMINO_SERVER | Domino Server FQDN which hosts vuserinfo.nsf, leave the value blank if accessing the database from local file system |
| NAMES_DBPATH | Path to Names.nsf database |
| VPUSERINFO_DBPATH | Path to VPUserInfo.nsf database |
| EXPORT_TO_TEXT | True False, set true if you want to export buddy list as text files |
| ENABLE_SEARCH_FILTER | True False, if true then buddy list will be exported for users specified in the text file |
| SEARCH_FILTER_FILE | Path to text file having usernames, If the above mentioned setting is set to true then application will export buddy lists for users specified in the text file |
| EXPORT_DIRECTORY | Path of the folder to which buddy lists will be exported |
| ENABLE_EXPORT_BY_COUNT | True False, if set to true only a specified number of users buddy list will be exported |
| EXPORT_COUNTER | If the above mentioned setting is set to true then application will export buddy lists for specified number of users |
| GENERATE_STATISTICS | True False, if true application will generate statistics like: List of public groups, count of private groups and list of email addresses for all users |

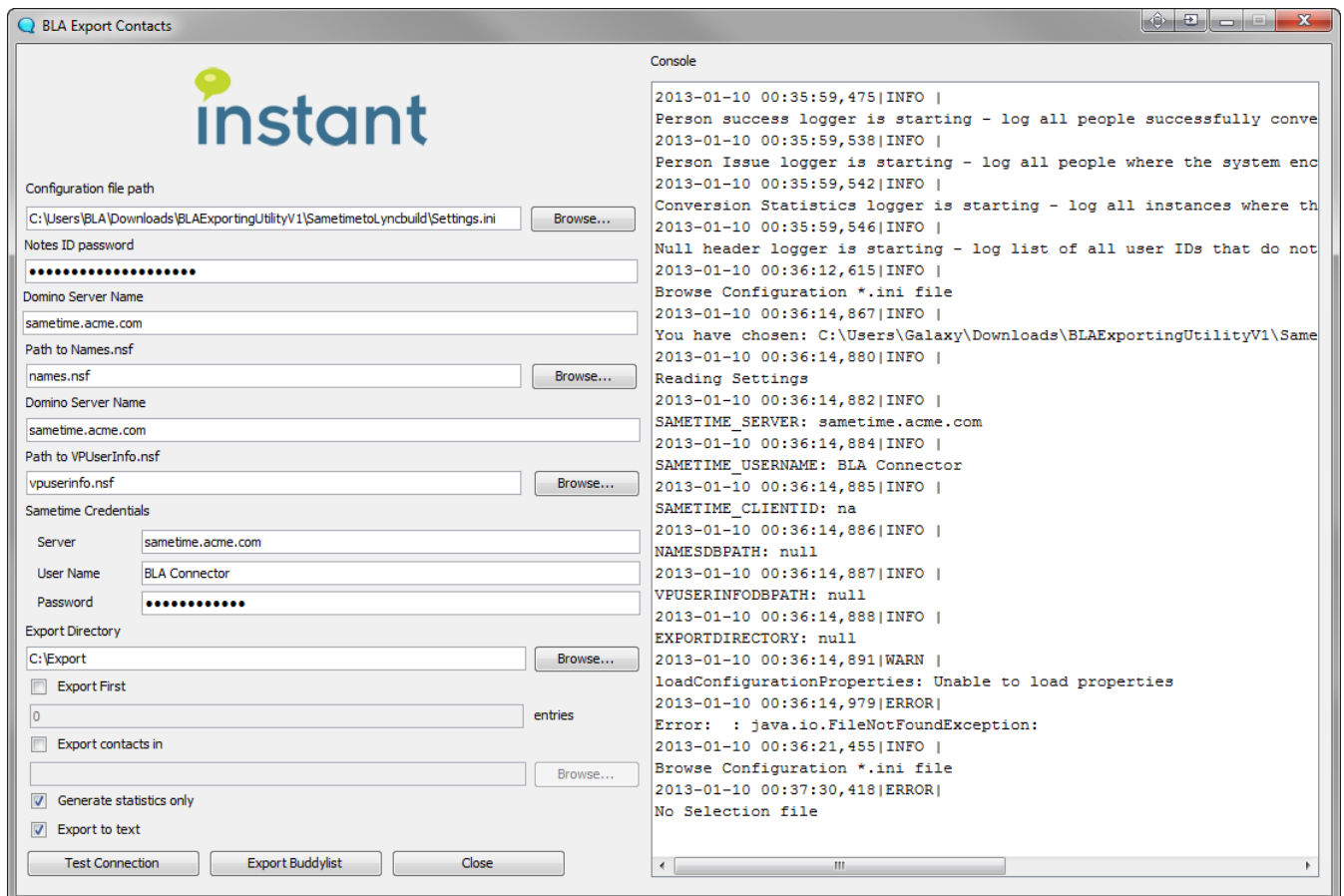
After specifying settings save file.

Running Utility – To Export Buddy lists

After specifying the settings execute run.bat file.



Next you should see the following dialog:



Use the “Browse...” command button option to specify path to settings file. Next verify the settings and use the “Test Connection” option to check database connections.

After verifying the database connections use the “Export Buddylist” command button option to start the export process.

The following dialog demonstrates a sample export activity:

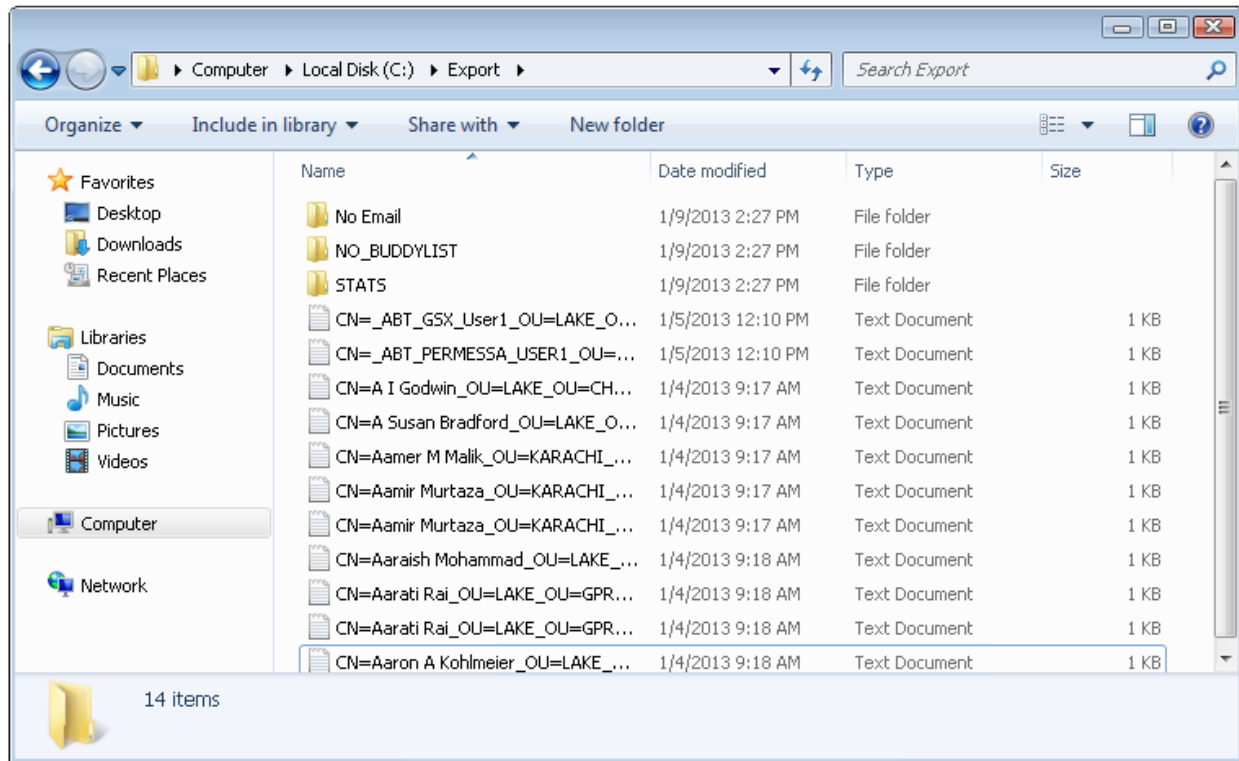
The screenshot shows a configuration dialog box for the Instant Buddy-List Exporting Utility. The dialog is titled "Configuration file path" and contains several sections for user input:

- Configuration file path:** A text box containing "C:\Users\BLA\Downloads\BLAExportingUtilityV1\SametimeToLyncbuild\Settings.ini" and a "Browse..." button.
- Notes ID password:** A text box filled with 15 black dots.
- Domino Server Name:** A text box containing "sametime.acme.com".
- Path to Names.nsf:** A text box containing "names.nsf" and a "Browse..." button.
- Domino Server Name:** A text box containing "sametime.acme.com".
- Path to VPUserInfo.nsf:** A text box containing "vpuserinfo.nsf" and a "Browse..." button.
- Sametime Credentials:** A section with three sub-fields: "Server" (sametime.acme.com), "User Name" (BLA Connector), and "Password" (15 black dots).
- Export Directory:** A text box containing "C:\Export" and a "Browse..." button.
- Export options:** A section with several checkboxes and a text box:
 - Export First
 - A text box containing "0" followed by the label "entries".
 - Export contacts in
 - A text box containing a blank space and a "Browse..." button.
 - Generate statistics only
 - Export to text
- Buttons:** Three buttons at the bottom: "Test Connection", "Export Buddylist", and "Close".

Exported Content

Once the export process has been started you should see the buddy lists XML files getting created in the

“Export Directory”.



Apart from XML files you would see following directories:

1. No Email: This folder holds the list of XML files for users that have an entry in vuserinfo database but are not present in Address Book (Names.nsf)
2. No BuddyList: This folder holds the name of users who do not have a buddy list but are present in the Address Book (Names.nsf)
3. STATS: This folder holds various statistics files

Buddy list XML files

Format of XML file is as follows:

```
<?xml version="1.0" encoding="UTF-8"?>
<xmlBuddyList>
  <requestStatus>SUCCESS</requestStatus>
  <Name>A Godwin</Name>
  <UserEmailAddress>agodwin@acme.com</UserEmailAddress>
  <STUserID>CN=A I Godwin/OU=ACME/OU=CHMS/O=CONTRACTOR</STUserID>
  <DateExported>01-04-2013</DateExported>
  <BuddylistGroups>
    <Group>
      <GroupName>Work</GroupName>
      <GroupUsers>
        <User>
          <UserType>INTERNAL</UserType>
          <UserEmailAddress>johndoe@acme.com</UserEmailAddress>
          <UserSTUserID>CN=John Doe/OU=ACME/OU=CHMS/O=CONTRACTOR</UserSTUserID>
        </User>
      </GroupUsers>
    </Group>
  </BuddylistGroups>
</xmlBuddyList>
```

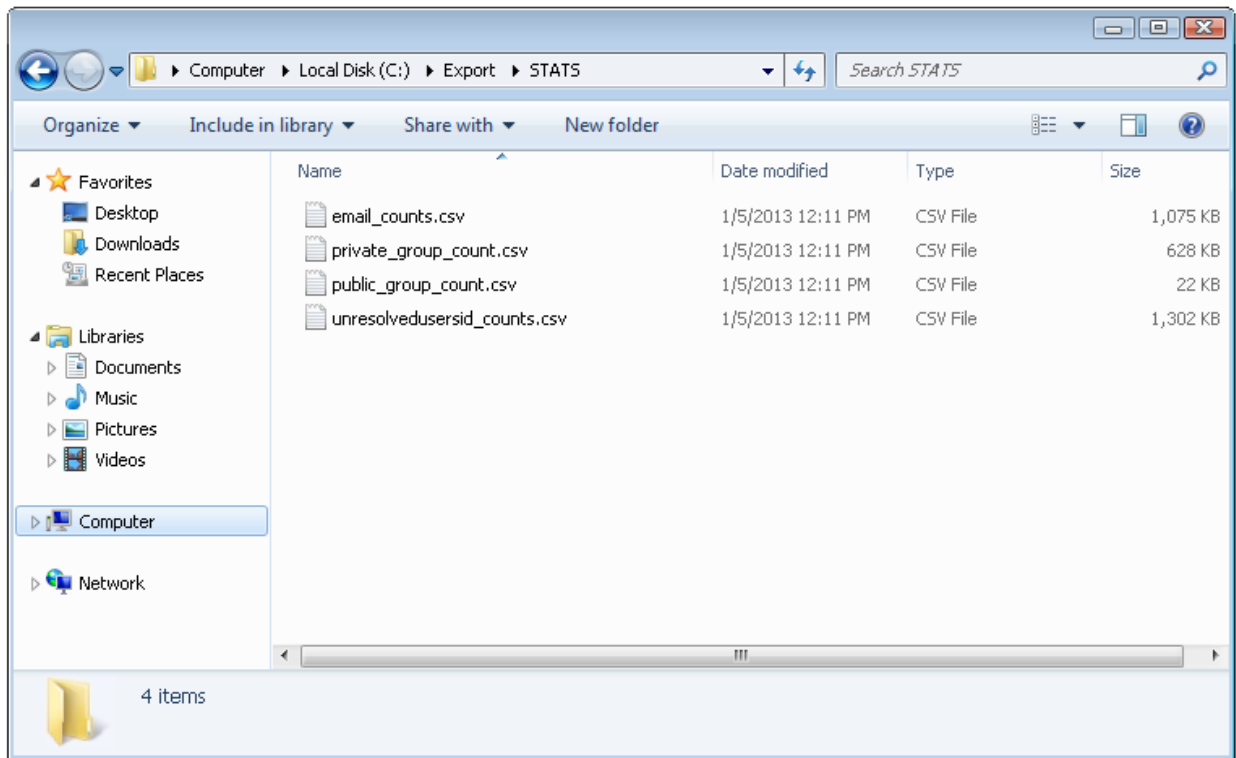
XML file contains group name, STID & email address of the users present in the buddy list.

The following example demonstrates an XML contact list structure with one public group and one Sametime private group. The contacts are marked as either internal or external, their original Sametime User ID (STID) is provided, and their internal email address is also included.

```
<?xml version="1.0" encoding="UTF-8" ?>
- <xmlBuddyList>
  <requestStatus>SUCCESS</requestStatus>
  <Name>Mark Kennedy</Name>
  <UserEmailAddress>Mark.Kennedy@Acme.com</UserEmailAddress>
  <STUserID>CN=Mark A Kennedy/OU=Portsmouth/OU=CHMS/O=Acme</STUserID>
  <DateExported>09-11-2012</DateExported>
- <BuddylistGroups>
  - <Group>
    <GroupType>Public</GroupType>
    <GroupName>7d9b99 86256b45/ABT_TW_WGT</GroupName>
  </Group>
  - <Group>
    <GroupName>OneEmail</GroupName>
    - <GroupUsers>
      - <User>
        <UserType>INTERNAL</UserType>
        <UserEmailAddress>nichole.kohl@Acme.com</UserEmailAddress>
        <UserSTUserID>CN=Nichole A Kohl/OU=Portsmouth/OU=CHMS/O=Acme</UserSTUserID>
      </User>
      - <User>
        <UserType>INTERNAL</UserType>
        <UserEmailAddress>kevin.shoemaker@Acme.com</UserEmailAddress>
        <UserSTUserID>CN=Kevin P Shoemaker/OU=Portsmouth/OU=CHMS/O=Acme</UserSTUserID>
      </User>
      - <User>
        <UserType>INTERNAL</UserType>
        <UserEmailAddress>diane.edlefsen@Acme.com</UserEmailAddress>
        <UserSTUserID>CN=Diane S Edlefsen/OU=Portsmouth/OU=CHMS/O=Acme</UserSTUserID>
      </User>
    </GroupUsers>
  </Group>
</BuddylistGroups>
</xmlBuddyList>
```

Statistics

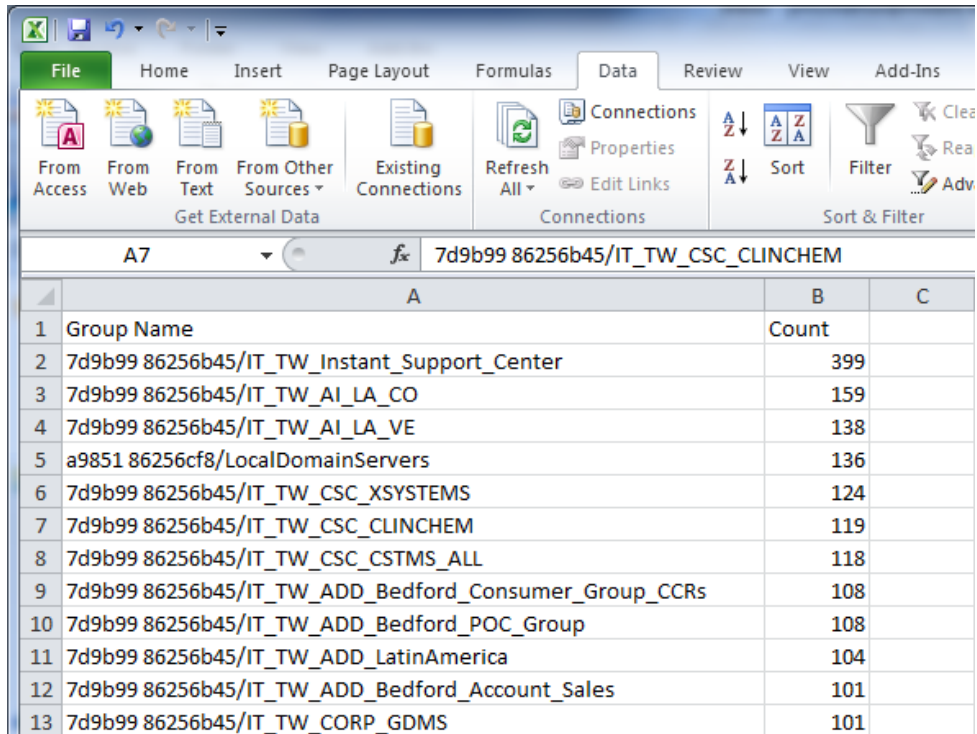
STATS folder contains all the statistics. Contents of folder look like the following screen shot:



It contains following CSV files:

1. email_counts.csv: This file lists all the email addresses and the count of buddy list in which they are present
2. private_group_count.csv: This file lists all the private group names and the count of buddy list in which they are present
3. public_group_count.csv: This file lists all the public group names and the count of buddy list in which they are present
4. unresolveduserid_counts.csv: This file lists all the STIDs that are present in users buddy list but do not exist in names.nsf

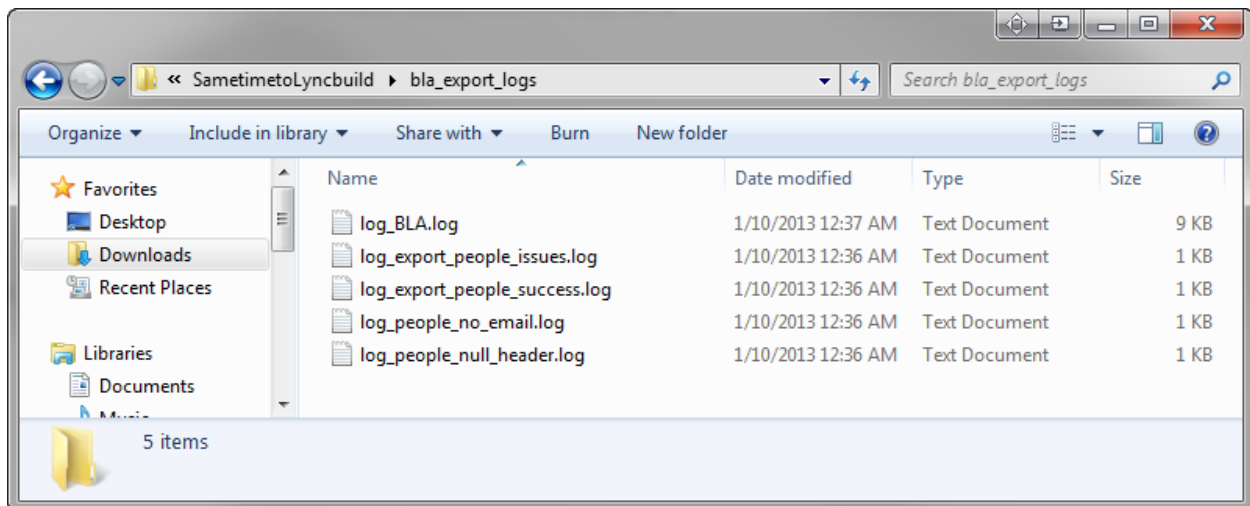
For example, a count of all of the public groups referenced throughout all the Sametime contact lists might look like the following screen shot.



| | A | B | C |
|----|---|-------|---|
| 1 | Group Name | Count | |
| 2 | 7d9b99 86256b45/IT_TW_Instant_Support_Center | 399 | |
| 3 | 7d9b99 86256b45/IT_TW_AI_LA_CO | 159 | |
| 4 | 7d9b99 86256b45/IT_TW_AI_LA_VE | 138 | |
| 5 | a9851 86256cf8/LocalDomainServers | 136 | |
| 6 | 7d9b99 86256b45/IT_TW_CSC_XSYSTEMS | 124 | |
| 7 | 7d9b99 86256b45/IT_TW_CSC_CLINCHEM | 119 | |
| 8 | 7d9b99 86256b45/IT_TW_CSC_CSTMS_ALL | 118 | |
| 9 | 7d9b99 86256b45/IT_TW_ADD_Bedford_Consumer_Group_CCRs | 108 | |
| 10 | 7d9b99 86256b45/IT_TW_ADD_Bedford_POC_Group | 108 | |
| 11 | 7d9b99 86256b45/IT_TW_ADD_LatinAmerica | 104 | |
| 12 | 7d9b99 86256b45/IT_TW_ADD_Bedford_Account_Sales | 101 | |
| 13 | 7d9b99 86256b45/IT_TW_CORP_GDMS | 101 | |

Log files

While the application is running it generates a few log files in “<<application install location>>\bla_export_logs” folder:



1. **log_BLA.log:** This file holds application trace output.
2. **log_export_people_issues.log:** This file holds the list of users which application failed to export (due to an application error etc...).

3. **log_export_people_success.log:** This file holds the list of users whose buddy list were successfully exported.
4. **log_people_no_email.log:** This file holds the list of users that do not have an email address or are not present in the names.nsf database.
5. **log_people_null_header.log:** This file holds the list of users that have a blank buddy list.